



# PARKS ADVISORY COMMITTEE AGENDA



January 22, 2024

6:00pm      Public Meeting Session: Hybrid (Remote & In-Person)  
Customer Service Center – 3050 N Delta Hwy., Eugene  
Goodpasture Room

Members: Greg Hyde (Chair), Mike Allen (Vice-Chair), Julie Daniel, Timothy Foelker, Reilly Newman,  
Darlene Raish, Richard Vasquez

---

## PAC Meeting

- I.      **Introductions** – (5 min.)
- II.     **Public Comment** – (up to 10 min.)
- III.    **Assignment Review** – (5 min.)
- IV.    **Review of Meeting Summary** – All (5 min.)
- V.      **New Business** (20 min.)
  - 1) Large Event Oversight Committee Process
  - 2) Eagle Rock Park Concept Presentation
- VI.     **Old Business** (20 min.)
  - 1) 2023 Accomplishments & 2024 Goals
- VII.    **Staff & Committee Updates/Reports** – (10 min.)
  - 1) MLK Day Ice Storm Impact to Lane County Parks
  - 2) Zumwalt Shoreline Erosion
  - 3) 3-Mile Prairie
- VIII.   **Open** – All (5 min.)
- IX.    **Operations Report** - (5 min.)
- X.     **Meeting Wrap-up/Assignments** – (5 min.)
- XI.    **Adjourn**

## 2024 Meeting Dates:

JANUARY 22	MAY 13	SEPTEMBER 9
FEBRUARY 12	JUNE 10	OCTOBER 14
MARCH 11	JULY NO MEETING	NOVEMBER 18
APRIL 8	AUGUST NO MEETING	DECEMBER 9

Lane County Parks Advisory

December 18<sup>th</sup>, 2023

Meeting Summary

DRAFT

This written indexed summary of minutes is provided as a courtesy to the reader. The recorded minutes created pursuant to ORS 192.650(1) are the official minutes of this body under Oregon law.

The recorded minutes are available on the Parks Advisory Committee website:

<https://www.lanecounty.org/cms/One.aspx?portalId=3585881&pageId=4279856>

Members Present: Greg Hyde, Mike Allen, Darlene Raish, Julie Daniel, Reilly Newman, Timothy Foelker, Richard Vasquez

Members Absent: None

Staff Present: Brett Henry, Ed Alverson, Todd Bowen

Guests Present: Stephen Lawn, Steve Rafuse

Public Members: None

Meeting is called to order at 6:03 PM by Greg Hyde

**Introductions (00:00:00)**

**Public Comment**

- None

**00:02:11 Assignment Review**

- Keep 3-Mile Prairie on the agenda.
- Receive input from Kristin Lee regarding the electric vehicle infrastructure grant.
- Hear about stewardship and volunteers from Ed Alverson.
- Discuss off-leash dog access within Lane County Parks.

**00:03:10 Review of Meeting Summary**

- The minutes are missing the link to the PAC page on the Lane County website where the recordings are available. Mike Allen motioned to approve the minutes with the understanding that the missing website link will be added before the document is posted. Seconded by Tim Foelker, motion passed unanimously.

### **00:05:03 New Business**

#### **1) Mike Allen Second Term Application**

- Brett will place Mike Allen's reappointment application on the Board of County Commissioners agenda for January 9<sup>th</sup>.
- Reilly Newman motioned to recommend Mike Allen for a second term on the Parks Advisory Committee. Seconded by Greg Hyde, motion passed unanimously.

#### **2) 2023 Accomplishments & 2024 Goals**

- Please view Meeting Materials and provide Brett suggestions by 1/15/24.

### **00:19:08 Old Business**

#### **1) New Parks Division Employees**

- Rebecca Shepherd is the newly hired Planner & Designer, she started December 4<sup>th</sup> and is a Landscape Architect.
- Steve Rafuse is the newly hired Parks Superintendent who starts in January 2024.
- An offer was made for the Camp Host Coordinator position, waiting for a response from applicant.

### **00:29:22 Staff & Committee Updates/Reports**

#### **1) Quarterly Levy Update to Board of Commissioners (full packet & presentation slides)**

- Please view Meeting Materials to see the items presented to the Board of Commissioners.

#### **2) Year-End Maintenance Report**

- 5 PM2's were hired this year.
- Equipment orders placed for tools to better assist the maintenance of our parks in a more safe and timely manner.
- Safety and de-escalation trainings scheduled for all new staff members to aide safety measures within our park system.
- Four 5,000-gallon tanks were added at Richardson Park for water supply for the campground/marina as well as Orchard Point Park day-use.
- All main junction valves in Richardson Park B Loop were replaced.
- A new host site was installed at Harbor Vista Campground.
- The Mapleton boat ramp was dredged out for the season.
- The remodeled interior of caretakers house at Camp Lane.
- The Camp Lane basketball court was infested with bugs assessed for building integrity. Currently ongoing additional repairs.
- An extensive clean-up project was conducted at 3-Mile Prairie.
- Trees within multiple parks were assessed for possible safety hazards. Several tree removals took place.
- All Marina lighting at Orchard Point was replaced with LED lights.
- Parks successfully hosted a picnic for all Lane County employees at Richardson Park.

#### **3) 3-Mile Prairie**

- 7 encampments cleaned to date.
- Creating an established access point for staff and the public to minimize the unhoused presence within Armitage Park.

**01:27:24 Open**

- The winter edition of the Parks E-Newsletter was released.

**01:33:38 Operations Reports**

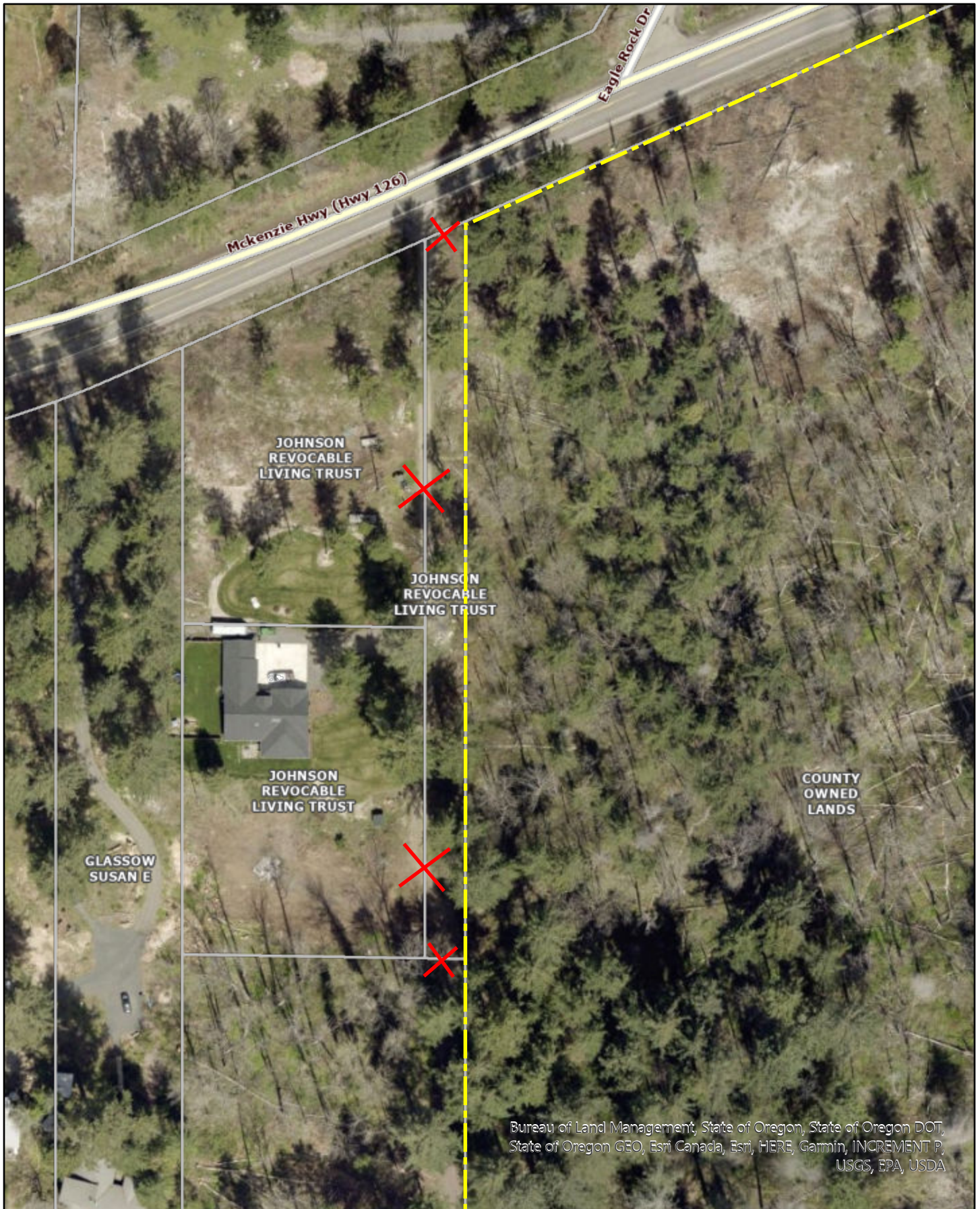
- Please see Meeting Materials

**01:34:59 Meeting Wrap-up/Assignments**

- E-mail 2023 Accomplishments & 2024 Goals to PAC members.
- Next meeting will occur on January 22, 2024.
- Add a link on the November meeting summary for the PAC webpage.
- Julie Daniel requested involvement with the MOU between the County and Bring Recycling.
- Provide an update on the Hileman flood plain restoration proposal from Ed Alverson.
- Put Mike Allen's application on the Board of Commissioners agenda for January.
- Receive input from Kristin Lee regarding the electric vehicle infrastructure grant.

**Meeting adjourned at 7:43 PM**





Bureau of Land Management, State of Oregon, State of Oregon DOT,  
State of Oregon GEO, Esri Canada, Esri, HERE, Garmin, INCREMENT P,  
USGS, EPA, USDA

The information on this map was derived from digital databases on the Lane County regional geographic information system. Care was taken in the creation of this map, but is provided "as is". Lane County cannot accept any responsibility for errors, omissions or positional accuracy in the digital data or the underlying records. Current plan designation, zoning, etc., for specific parcels should be confirmed with the appropriate agency. There are no warranties, expressed or implied, accompanying this product. However, notification of any errors will be appreciated.



0 20 40 80  
Feet

Eagle Rock Park

Lane County, Oregon





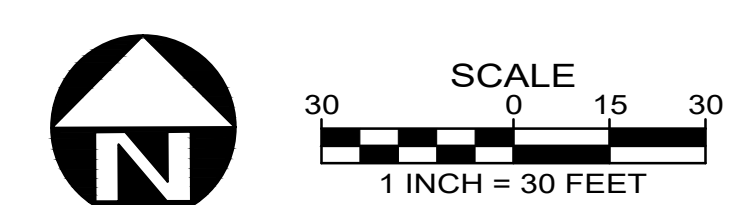
#### LEGEND

- ① PUBLIC ACCESS AND PARKING TO ALIGN WITH EAGLE ROCK DRIVE
- ② GRAVEL PARKING WITH 5 STANDARD PARKING SPACES AND 1 ADA SPACE WITH MAINTENANCE AND VEHICLE TURN AROUND
- ③ PARK ENTRY WITH EAGLE ROCK SIGN, INCLUDING USE RULES AND A PET WASTE STATION
- ④ PRIVATE PROPERTY AND PARK ADMINISTRATIVE ACCESS
- ⑤ GATE WITH CONTROLLED ACCESS LOCK
- ⑥ 5' WIDE GRAVEL PATH BUILT TO UNIVERSAL ACCESS STANDARDS AND A 5% MAXIMUM SLOPE
- ⑦ SCREENING WITH NATIVE PLANTS
- ⑧ ROCKERY WALL
- ⑨ SINGLE RESTROOM WITH VAULT TOILET, EXTERIOR TRASH RECEPTACLE
- ⑩ SHUTTLE TURNOUT WITH 3' WIDE UNIVERSAL ACCESS GRAVEL PATH CONNECTING TO 5' WIDE PATH AND RESTROOM BUILDING
- ⑪ 2 GRAVEL PARKING SPACES WITH WHEELSTOPS
- ⑫ 12' WIDE GRAVEL DRIVE AND TURNAROUND
- ⑬ PARK HOST SITE WITH 1 CAR AND 1 RV PARKING SPACE, ELECTRICAL AND WATER HOOK-UPS, GRILL, PICNIC TABLE AND HOSE BIB
- ⑭ TYPE 2 HELICOPTER LANDING ZONE, 91' DIAMETER
- ⑮ EAST MEADOW WITH 1 PICNIC TABLE
- ⑯ OVERLOOK WITH VIEW OF EAGLE ROCK AND RAPIDS, 2 BENCHES AND 1 INTERPRETIVE SIGN
- ⑰ NATIVE PLANTING AND GARDEN AREA WITH PUMP HOUSE THAT MAINTENANCE CAN ACCESS FROM THE GRAVEL DRIVE
- ⑱ 5' WIDE GRAVEL PATH TO RIVER
- ⑲ 16' X 24' SHELTER WITH STONE COLUMNS, CONCRETE FLOOR, 2 ADA PICNIC TABLES, TRASH RECEPTACLE, AND HOSE BIB
- ⑳ TIMBER STAIRS WITH SINGLE HANDRAIL AND ACCESS TO THE RIVER
- ㉑ EXISTING LABYRINTH TO BE PRESERVED AND REINSTALLED
- ㉒ 2 PICNIC TABLES IN WEST MEADOW
- ㉓ MEMORIAL BENCH
- ㉔ WEST MEADOW WITH NATIVE TREES TO REPLACE EXISTING FRUIT TREES
- ㉕ PARK DIRECTIONAL SIGN AND PET WASTE STATION
- ㉖ PARK PROPERTY LINE

NOTE:  
THIS PLAN IS A FEASIBILITY STUDY, ILLUSTRATING EAGLE ROCK PARK'S CAPACITY TO ACCOMMODATE CERTAIN OUTDOOR SPACE ELEMENTS AND RECREATIONAL EXPERIENCES. THIS SHOULD NOT BE INTERPRETED AS A "SITE DESIGN" OR A "CONSTRUCTION DOCUMENT".

## EAGLE ROCK PARK

January, 2024





## **Lane County Parks Advisory Committee**

### **2022 Accomplishments**

- Continued implementing the Large Event Oversight process.
- Filled PAC vacancies. Recommended appointment of Timothy Foelker (District 1) & Richard Vasquez (District 5) to first terms.
- Continued to identify and support efforts to secure sustainable funding for the park system. Two PAC members (Kevin Shanley & Jim Mayo) served on Parks Funding Task Force.
- Provided key support for the successful passage of 5-year local option levy on the November 2022 ballot.
- Continued to receive presentations and provide recommendations to the Board of Commissioners regarding park acquisitions, maintenance agreements and lease arrangements (e.g. North Jetty Park).
- Reviewed and commented on plans for the Armitage Campground Expansion project.
- Reviewed and commented on the Facilities Condition Assessment with the goal of reducing the backlog of deferred maintenance.
- Reviewed and commented on plans for the use of American Rescue Plan Act funding for evaluating and improving the water and sewer infrastructure at Armitage, Baker Bay, Orchard Point, and Richardson parks.
- Reviewed and commented on plans for the construction of three cabins at Harbor Vista Park.
- Worked with Parks staff with the implementation of the Parks Master Plan through Action Plans. Three Action Plans were selected as priorities: improve park accessibility, establish a Water Trail, & improve park entrances.
- Reviewed and commented on implementation of the HBRA Habitat Management Plan (projects: Eastern Uplands, Ponderosa, and Coast Fork Trail).
- Evaluated future use of and access to Three Mile Prairie. Mike Allen met with Florence Public Works Director to explore support from the City of Florence.
- Reviewed and endorsed the Lane County Community Climate Resilience Plan – Phase 3 of the Climate Action Plan. PAC member Mike Allen served as a liaison and presented the endorsement to the Board of Commissioners that unanimously adopted the plan.
- Participated in a field trip to Harbor Vista Park, North Jetty Park, & Three Mile Prairie.

## **Lane County Parks Advisory Committee**

### **2023 Goals**

- Support Parks staff with the implementation of the 5-Year Levy, which will reduce the maintenance backlog and supplement significant capital and operational improvements.
- Continue searching for additional sustainable funding opportunities and support the renewal of the local option levy.
- Support development of a Business Plan with a marketing/branding strategy and an Economic Impact Analysis to determine long-term sustainability of the parks system.
- Support staff in their efforts to streamline park operations and services to best suit community needs.
- Support staff's efforts to determine the carrying capacity of the parks system. Limited financial resources and a large geographic footprint have resulted in a less than ideal service level.
- Support staff and community partners in identifying sustainable funding sources for capital improvements and long-term maintenance of the "off-line" covered bridges.
- Support an annual review of Parks Fees with a consideration for charging out of state camping fees and reducing the number of parks that require a day-use parking pass.
- Support staff's efforts to address the failing water and sewer infrastructure identified in the Facility Condition Assessment.
- Support development of a Preventative Maintenance & Asset Management Program as recommended by the Facilities Condition Assessment.
- Support Parks staff with the implementation of the HBRA Habitat Management Plan.
- Support investigation and evaluation of the off-leash dog rules/policy at Howard Buford Park through a collaborative public process.
- Support Parks staff with the Armitage Campground Expansion project.
- Participate in a Park tour/field trip.
- Support the Adopt-a-Park volunteer program.
- Receive an update on the McKenzie Fish Hatchery Discovery Center project.
- Support a long-term lease agreement with the Department of State Lands for the North Jetty property.
- Support increased security and safety at County Parks.
- Continue to implement the Master Plan through the execution of Action Plans.
- Explore a non-profit parks foundation.
- Support implementation of the Lane County Climate Action Plan.
- Evaluate regional trail opportunities. Support the execution of a Regional Trail Master Plan.
- Support enhancing accessibility (cultural & physical barriers) of facilities at County parks (includes trails).
- Evaluate limited public access to Three Mile Prairie.

1. Event: Winter Storm with freezing rain on Saturday 1/13/24 & Monday 1/15/24
2. Most valley parks will remain closed until we evaluate and determine they're safe to open and/or complete hazardous tree assessments from an arborist & remove all hazards
3. List of park closures as of 1/19/2024
  - Archie Knowles
  - Armitage: Day-Use; Campground is open
  - Baker Bay
  - Bellinger Landing
  - Big River
  - Blue Mountain Park
  - Camp Lane
  - Cinderella
  - Deadmond's Ferry Landing
  - Deerhorn Landing
  - Eagle Rock
  - Forest Glen Landing
  - Greenwood Landing
  - Hamlin
  - Hayden Bridge
  - Helfrich Landing
  - Hendricks Bridge
  - Hileman
  - Howard Buford Recreation Area (Mt. Pisgah)
  - Howard J. Morton
  - Kinney
  - LaSells Stewart
  - Leaburg Dam Boat Slide
  - Leaburg Landing
  - Linslaw
  - Osgood/Unity
  - Peaceful Valley
  - Rennie's Landing
  - Rodakowski Landing
  - Siuslaw Falls
  - Tide
  - Vickery
  - Wildwood Falls
4. County & State declared an Emergency Declaration. Awaiting federal Emergency Declaration for possible FEMA financial assistance. Complete initial damage assessment with cost estimate.
5. File for the 2024 Ice Storm for all photos, receipts, contracts, and other relevant documents.

6. Procurement of contracts during an Emergency Declaration.
  - The request needs to go through the EOC. We will need to have the request on one of our 213RR forms and it will need to be approved by the Incident Commander.
  - Since we may seek FEMA reimbursement, if the contract exceeds \$10k then an attempt at getting three quotes is required. These can be based on labor/equipment rates and availability. Three quick phone calls will suffice.
  - Time/Equipment based contracts are allowed but must include a not-to-exceed amount.
7. Timecard coding for ice storm for staff and equipment hours.
8. Possible county-wide debris contract?
9. Contact arborists & tree contractors. See lists below.
10. HBRA
  - Park closed to the public. Need to continue checking type-2 barriers at west entrance.
  - Brett will ask permission to install gates at both entrances.
  - Bonneville Power Administration (BPA) reported two powerlines down (along Marion-Alvey line on Trail 46 & near Trail 4 on the Santiam-Alvey line) and a damaged tower on the Santiam-Alvey powerline near Trail 4. They need access to repair the tower and lines.
  - BPA has a security guard at the east entrance.
  - Re-occurring daily meetings with HBRA Stakeholders to coordinate recovery
  - Trail Assessment - Sheriff's mounted posse (Alan Murphy) will geolocate down trees blocking access on upland trails
    - Start with riding along Trails 1 & 2.
    - Use Trail Segments Map & Avenza Maps App to place pins where there's hazards
  - Scorpions crew available to assist 1/25 & possibly as early as 1/23
    - triage list of trails to assess
    - punch list of assessment criteria that the County is looking for to understand the situation, and
    - assign trail segments so there isn't redundancy among staff or contractors
  - Sperry Tree Care (Alby) will meet with the Arboretum on Monday at noon.
  - County can provide a lift to remove hangers along accessible lowland trails.
  - The Arboretum & Friends must submit hours and equipment to FEMA directly (not through the County) for recovery work conducted within their leased areas, if declaration is approved.
11. Hendricks Bridge Park is the vegetative debris staging area for our parks; sharing space with Roads with separate debris piles. Valley crew cleared debris at park entrance for caretaker to return.
12. Several caretakers without power.
  - Dan Horn at Blue Mountain Park
  - Alan at Baker Bay
  - Teale at Camp Lane
  - Armitage House for shelter, if needed by caretakers and hosts
  - Fuel to Alan at Baker Bay & Dan at Blue Mountain, & Teale at Camp Lane for generators

- Camp Lane tours on hold
13. Need more "Park Closed" signs and type-2 barricades to place at closed parks.
    - Tara will order another 30 signs from Sign Shop and 50 type-2 barricades.
  14. Armitage Campground. Site 31 offline.
  15. Cleaning up debris from parks. Track employee hours and equipment hours for timecards.
  16. Daily re-occurring debriefs with Parks staff scheduled next week @ 3pm.









Image © 2023 Maxar Technologies

234 ft

Google Earth







1997





# 2015





2020



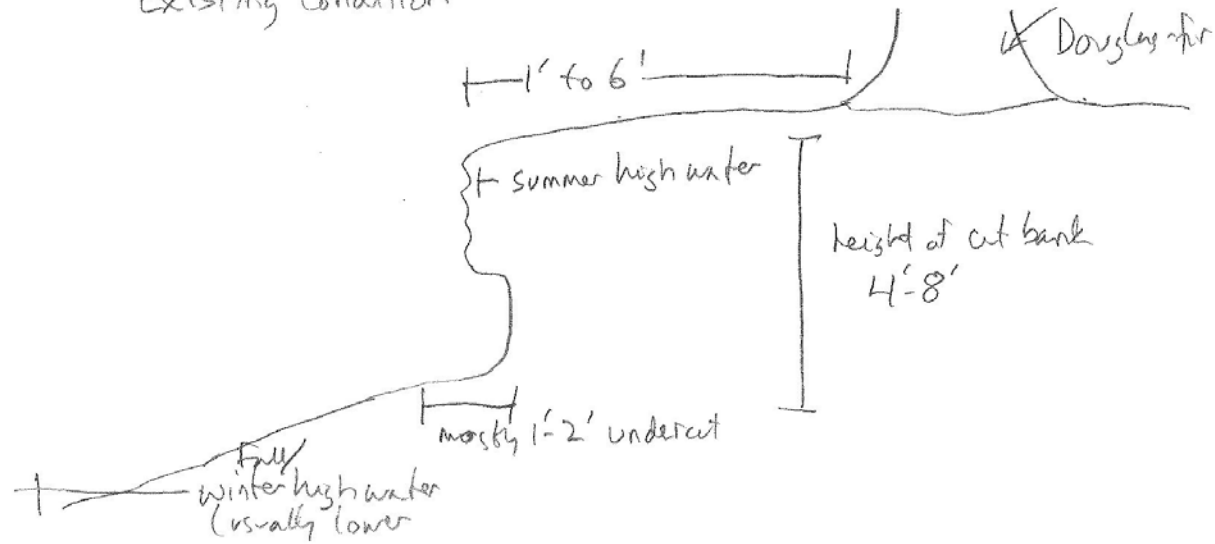




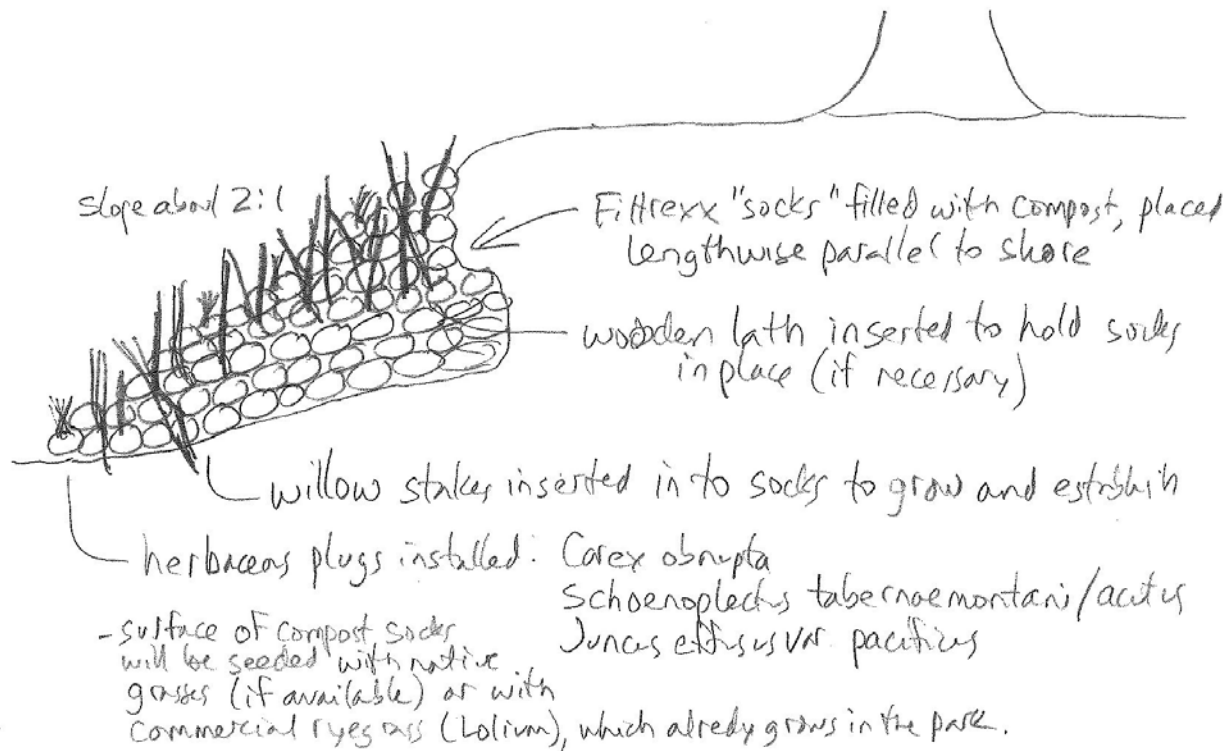


Zumwalt Park Shoreline Stabilization Project  
Existing Condition

10/2017



Proposed Remedy - sideview



## **Lane County Parks Operations Report December 2023**



The purpose of this report is to provide a summary of operational highlights for the month of December.

### **Coast Zone**

- General maintenance runs
- Leaf removal
- Tree cleanup at Camp Lane & Harbor Vista parks
- Adirondack removal and shed repairs at Camp Lane

### **Valley Zone**

- General Maintenance runs
- Leaf removal
- Replacing all pedestal valves Richardson B- Loop Campground
- Repainted Orchard Point marina restroom
- Working on sewage system at Baker Bay Park
- Weekly campground assistance with late check outs



## **Lane County Parks Natural Areas Operations Report for December 2023**

Ed Alverson, Natural Areas Coordinator

**HBRA Friends of Buford Park 2024 Work Plan:** This month we presented the Friends 2024 work plan for HBRA to the Local 626 and Admin-Pro Union presidents, following the protocols outlined in agreements between Lane County and the unions, with the request that the unions waive their right to bargain the work planned to the Friends.

**HBRA Ponderosa Project:** Friends of Buford Park continued their work on this habitat restoration project, and Parks has now received all the payments for log sales in 2023.

**HBRA Trails:** I continued to coordinate with Friends of Buford Park staff on the Trail 3 East project. We did a site visit to mark the route of segment 2, which will be a new portion of the trail that will also involve closing and putting to be a part of the current trail that is problematic.

**HBRA North Bottomlands Trailhead Kiosks:** This month parks staff met with Sea Reach to revise the scope of work and finalize the timeline for completion.

**HBRA Burn Outreach:** I wrote an article for the Parks quarterly newsletter on the 2023 prescribed burns in HBRA.

**HBRA Meetings:** Monthly coordination meetings included the Monthly HBRA stakeholder meeting, and the Friends of Buford Park Trails Committee meeting. I participated in a meeting of the project team working on the waterway access project on the Coast Fork Willamette.

**Eagle Rock Park:** I worked with Dan Miller from the RTCA program to create the text for the report that will support the site plan for Eagle Rock Park. Rebecca Shepard and I made a site visit this month and we worked together to review and comment on the site plan that the RTCA landscape architect is producing.

**BLM Fuels Management Work:** I've been working to set up a project with a contractor to do fuels management (masticating blackberry and scotch broom) in about 10 acres of uplands in Blue Mountain Park. These are areas that had been logged about 20 years ago but did not regenerate adequately with native species. The masticating will facilitate future plantings.

**Armitage Campground Expansion:** I participated in a project team meeting to discuss work on the water and sewer systems.

**Project Meetings:** I participated Parks Levy project meetings and a project management software discussion.

**Partnership Meetings:** I participated in this month's Rivers to Ridges Implementation team meeting, as well as an after-action meeting with the R2R prescribed burning subgroup. Brett and I met with Clint Culpepper, Cycle Oregon staffer who manages the Oregon Scenic Bikeway program. I was interviewed by Abby Colehour about the Upper Willamette Soil and Water Conservation District's efforts around oak and prairie habitat conservation and restoration.

And, I will note that as of the end of 2023, the Lane County Parks Flora and Fauna iNaturalist project has logged over 17,500 observations, representing over 2000 species of animals, plants, and fungi. See <https://www.inaturalist.org/projects/plants-and-animals-in-all-lane-county-parks-umbrella-project?tab=observations>